



COUNCIL TAX 2021-2022

How much you pay...
How it's spent...

YOUR COUNCIL TAX BILL

No one could have imagined what 2020–2021 had in store for our city. The Covid-19 pandemic is the biggest global crisis in a lifetime and the council has been working hard throughout the course of this unprecedented year to respond to both the ongoing health emergency and the associated economic shock.

In addition to supporting and protecting our residents and businesses, maintaining as much normality as possible has also been a really important feature of helping people to live with the pandemic. That's why we've continued on a business-as-usual footing wherever possible, ensuring that the bins are emptied, our household waste and recycling centres have remained open, digital library books have been available and special versions of events have been taken online.

At the same time, significant progress has been made with our social and economic regeneration plans. In light of the impacts of Covid-19, we have reviewed the City Plan to ensure Sunderland continues to deliver, at pace, our ambition to build a connected, international city with opportunities for all.

The huge strides already made in this past year include:

- Being named the Smart City of the Year for our vision and ambition to develop and deploy new technologies for the benefit of residents and businesses;
- Launching the Masterplan and Future Living Expo for Riverside Sunderland, described as one of Britain's most exciting regeneration sites;
- Continuing with the regeneration of the seafront with new housing, hotel and leisure developments; and
- Attracting further, private sector manufacturing investment to Washington; and
- Becoming a housing landlord again after almost 20 years, which is a key part of delivering our affordable housing plans.

Over the next two years, further progress on the city's economic growth, that will in turn benefit our residents, will include:

- Building on our Riverside Sunderland plans and delivering a number of priority projects including development of the Culture House;
- CityFibre starting their investment programme of £62m in Sunderland, as part of their plans to improve connectivity so that nearly every home and business in Sunderland will gain access to next-generation broadband;
- Accelerating our plans for the rollout of 5G mobile services;
- Opening Sunderland Strategic Transport Corridor Phase 3 (Northern Spire to City Centre); and
- Continuing to use residents' views to shape neighbourhoods across the city through Neighbourhood Investment Plans, as well as reviewing how services are delivered across our communities.

The Government continues to underfund local government, with their budget cuts since 2010 placing councils under considerable financial strain. For 2021–2022, in addition to the council tax rise, we have had to make further budget cuts of £6.3m and use £2.3m of reserves to balance the budget. It is within this context, that unfortunately, we are left with no alternative other than to raise council tax.

As we move in to 2021–2022 there is no doubt that some challenges from the pandemic will remain. But we are resolute in our absolute commitment to do everything possible, working with our communities and partners, to create the conditions for the city and its people to fulfil their massive potential.



Cllr Graeme Miller

Leader of
Sunderland City Council



Patrick Melia

Chief Executive
Sunderland City Council

WHAT YOU PAY

The amount of council tax you pay depends on the value of your home. More expensive properties pay more council tax. Each home is placed in a valuation band based on what your home was valued at in 1991. This table sets out the council tax levels for 2021–2022 for each valuation band.

Your council tax bill states the band that applies to your property. Residents in most of Sunderland will pay the Total council tax level in column 5. Residents of Hetton will pay the Total council tax level in column 7.

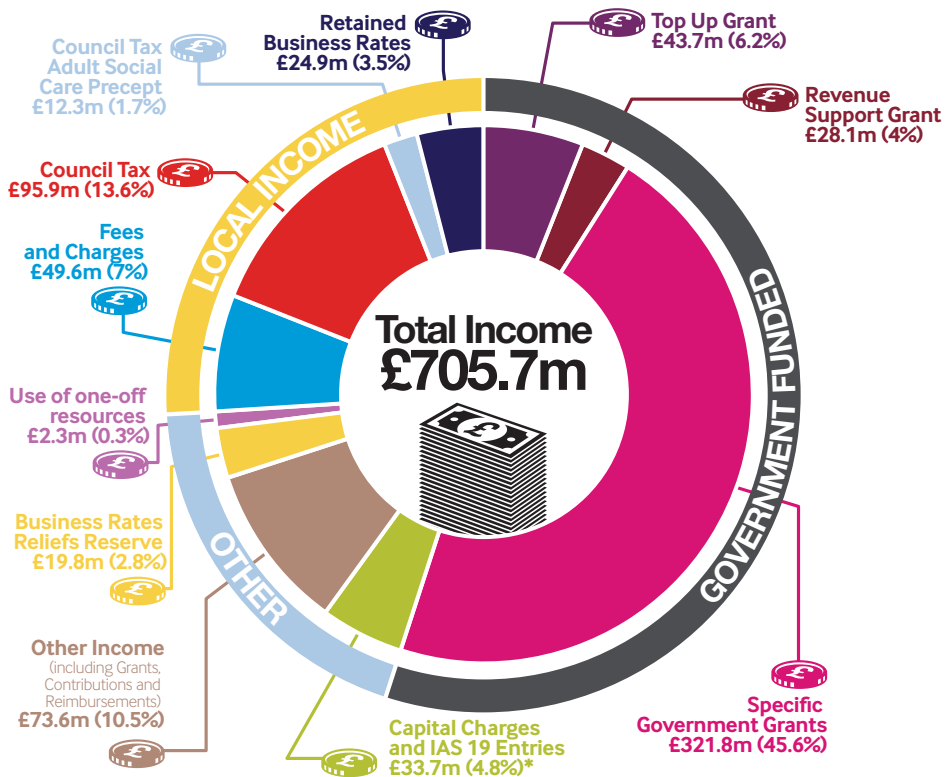
1	2	3	4	5	6	7
Valuation band	City council tax level	Tyne and Wear Fire and Rescue Authority tax level	Police and Crime Commissioner for Northumbria tax level	Total council tax level	Hetton residents only	
					Hetton Town council tax level	Total council tax level
	£ p	£ p	£ p	£ p	£ p	£ p
A	1,028.96	57.09	95.89	1,181.94	9.64	1,191.58
B	1,200.45	66.61	111.88	1,378.94	11.25	1,390.19
C	1,371.94	76.12	127.86	1,575.92	12.86	1,588.78
D	1,543.44	85.64	143.84	1,772.92	14.46	1,787.38
E	1,886.43	104.67	175.80	2,166.90	17.67	2,184.57
F	2,229.41	123.70	207.77	2,560.88	20.89	2,581.77
G	2,572.40	142.73	239.73	2,954.86	24.10	2,978.96
H	3,086.88	171.28	287.68	3,545.84	28.92	3,574.76

HOW RESIDENTS HELP SET THE BUDGET

A budget consultation took place between December 2020 and January 2021, seeking views on the budget savings proposals and the level of council tax increase for 2021–2022. The responses received during the consultation and feedback from residents have been used to inform the budget proposals for 2021–2022. In general, the consultation feedback supported the council's plans and a council tax increase to support the proposed budget and the continued investment in the city.

WHERE THE MONEY WILL COME FROM IN 2021–2022

The council delivers a wide range of services including schools, caring for the elderly and collecting rubbish. The cost of running and maintaining the day-to-day services provided by the council is called revenue expenditure. The council tax you pay forms only part of the funding to pay for these services. The chart below shows that over half of the money comes from grants from the Government and the remainder from council tax, retained business rates and income received from users of council services.



* Capital charges and IAS19 amounting to £33.7m are included in gross expenditure and income in accordance with the Service Reporting Code of Practice. This has no impact on the level of council tax.

STATEMENT CONCERNING ADULT SOCIAL CARE FUNDING

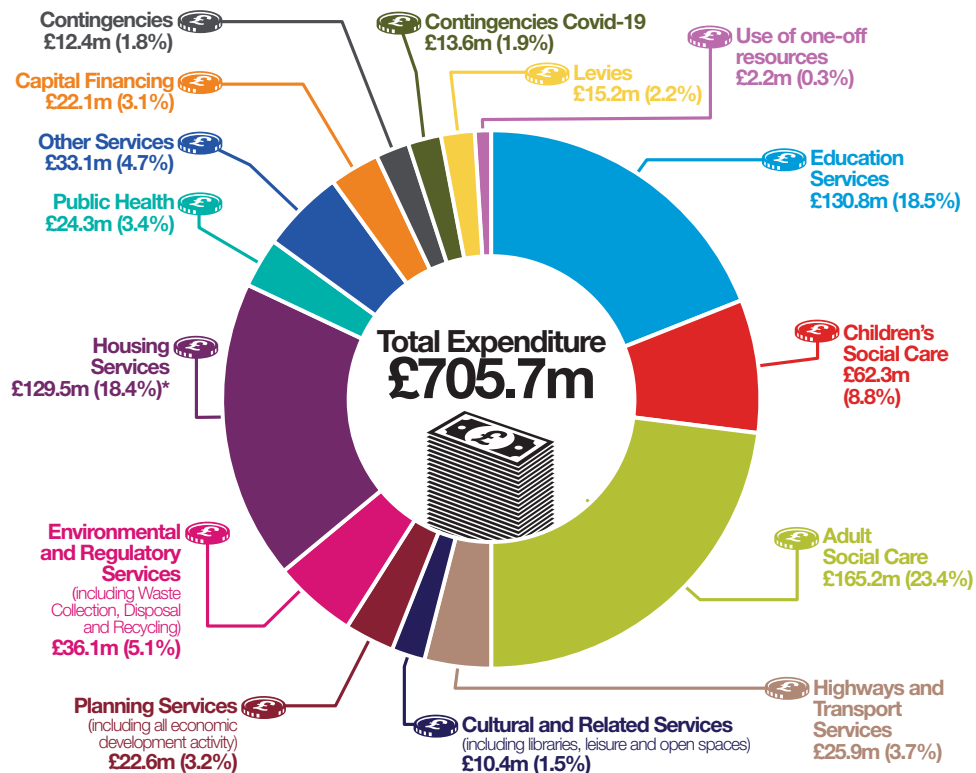
The Secretary of State made an offer to adult social care authorities. ("Adult social care authorities" are local authorities which have functions under Part 1 of the Care Act 2014, namely county councils in England, district councils for an area in England for which there is no county council, London borough councils, the Common Council of the City of London and the Council of the Isles of Scilly)

The offer was the option of an adult social care authority in meeting its expenditure on adult social care in the financial year 2016–17. It was originally made in respect of the financial year 2019–20. If the Secretary of State chooses to make the offer in a particular financial year, this is subject to the

WHERE THE MONEY WILL BE SPENT ON SERVICES FOR 2021–2022

The chart below shows what the Council plans to spend on its services in 2021–2022.

Total or gross expenditure is the total revenue costs of running council services before any income from grants, fees and charges are taken into account.



* This expenditure mainly relates to Housing Benefit payments, funded by specific government grant.

care authority being able to charge an out holding a referendum, to assist the ult social care from the financial year of the financial years up to and including s to renew this offer in respect of a he approval of the House of Commons.

This statement has been prescribed by government for inclusion with council tax billing information. The Secretary of State has renewed this offer in respect of 2021–2022 and the council has elected to increase this precept by 3%. The total council tax raised for 2021–2022 now includes the cumulative impact of 13% raised between 2016–2017 and 2021–2022. The additional £12.3m raised in 2021–2022 will help to meet expenditure on adult social care.

THE MAJOR ISSUES IN SETTING THE 2021-2022 BUDGET

The budget for the next financial year has been prepared taking account of spending pressures and commitments associated with provision of council services.

The cost of services

In addition to services provided by the council, other bodies including the Police and Crime Commissioner for Northumbria and the Tyne and Wear Fire and Rescue Authority also provide services which the council must take into account. This table provides a summary of the net cost of these services for 2021–2022 and how the council tax for Band D is built up.

Last Year 2020-2021 £m	Summary net cost of services	This Year 2021-2022 £m	Band D Council Tax £ p
104.870	City Council (including Levies)	108.110	1,543.44
5.990	Tyne and Wear Fire and Rescue Authority	5.999	85.64
9.773	Police and Crime Commissioner for Northumbria	10.075	143.84
120.633	Total	124.184	1,772.92
0.056	Hetton Town Council	0.055	14.46
120.689	Total (Hetton residents only)	124.239	1,787.38

Cost per head of population

The table below shows the total cost to each person in Sunderland of services provided by the council and Precepting Authorities, after taking account of the income received from Revenue Support Grant and Business Rates.

	Total Net Budget Requirement £	Government Funding* £	Retained Business Rates £	Collection Fund (Surplus)/ Deficit £	Council Tax Requirement £
City Council**	737.57	(258.67)	(89.60)	0.00	389.30
Tyne and Wear Fire and Rescue Authority	41.81	(17.91)	(4.08)	1.87	21.69
Police and Crime Commissioner for Northumbria	217.61	(178.82)	0.00	0.12	38.91
Total	996.99	(455.40)	(93.68)	1.99	449.90

*Reflects Revenue Support Grant and Top Up Grant

**City Council figure is based on population of 277,705, Tyne and Wear Fire and Rescue Authority and Police and Crime Commissioner for Northumbria figures are based on their wider regional populations

BUDGET INFORMATION

SUNDERLAND CITY COUNCIL BUDGET INFORMATION

The council needs to collect £3.3m more from council tax payers in 2021–2022 than it did in 2020–2021. This is because the increase in government funding is insufficient to meet increasing spending pressures. The full impact has been mitigated by use of reserves. Details are shown in the table opposite.

	£m
Net Funding Changes	(4.1)
Spending pressures and additional investment	14.3
Planned budget savings	(6.3)
Decrease in Business Rates receipts	1.7
Use of reserves	(2.3)
Total	3.3

Last Year 2020–2021				This Year 2021–2022		
Gross Expenditure £m	Gross Income £m	Net Expenditure £m		Gross Expenditure £m	Gross Income £m	Net Expenditure £m
157.2	73.4	83.8	Adult Social Care	165.2	75.6	89.6
63.8	4.2	59.6	Children's Social Care	62.2	5.0	57.2
122.2	107.0	15.2	Education Services	130.8	114.4	16.4
10.5	1.5	9.0	Cultural and Related Services	10.4	1.5	8.9
33.9	8.2	25.7	Environmental and Regulatory Services	36.1	8.2	27.9
31.2	12.2	19.0	Highways and Transport Services	25.9	6.8	19.1
128.5	125.8	2.7	Housing Services (non council housing costs)	129.5	125.9	3.6
21.2	12.2	9.0	Planning Services	22.6	12.5	10.1
23.4	23.4	0.0	Public Health	24.3	24.3	0.0
26.0	9.0	17.0	Other Services	33.1	14.6	18.5
0.0	38.0	(38.0)	Other Core Grants	0.0	54.4	(54.4)
25.4	0.0	25.4	Capital Financing Costs	22.1	0.0	22.1
643.3	414.9	228.4		662.2	443.2	219.0
10.3	0.0	10.3	Provision for contingencies and strategic priorities	12.4	0.0	12.4
0.0	0.0	0.0	Provision for contingencies Covid-19	13.6	0.0	13.6
0.0	1.8	(1.8)	Interest on Balances	0.0	1.8	(1.8)
0.3	0.0	0.3	Movement on Reserves (including Medium Term Planning Smoothing Reserve and Covid-19 Business Rates Relief Reserve)	2.2	22.1	(19.9)
0.0	28.7	(28.7)	Capital Charges and IAS 19 entries	0.0	33.7	(33.7)
653.9	445.4	208.5	TOTAL EXPENDITURE	690.4	500.8	189.6
			Levies and Precepts			
		14.9	North East Combined Authority			14.9
		0.2	Environment Agency - Flood Defence			0.2
		0.1	NE Inshore Fisheries Conservation Authority			0.1
		0.1	Hetton Town Council Precept			0.1
		223.8	TOTAL BUDGET REQUIREMENT			204.9
		28.0	Less Revenue Support Grant			28.1
		46.4	Retained Business Rates			24.9
		43.7	Top Up Grant			43.7
		0.8	Collection Fund Surplus			0.0
		104.9	COUNCIL TAX REQUIREMENT			108.2

BUDGET INFORMATION

LEVIES AND PRECEPTS

Your council tax bill is made up of a number of elements besides the council's council tax requirement. These include levies and precepts that the council is legally required to collect on behalf of other organisations. For Sunderland City Council these organisations are:

Levy: Environment Agency							Change in levy between years is:
Last Year 2020-2021			This Year 2021-2022			£m	
	Gross Expenditure £m	Gross Income £m	Net Expenditure £m	Gross Expenditure £m	Gross Income £m	Net Expenditure £m	0.0
Flood Defence	28.0	25.6	2.4	38.4	36.0	2.4	Sunderland's proportion of the Environment Agency levy is £0.232m in 2021-2022 (2020-2021 £0.231m).
Levy			2.4			2.4	

Levy: North East Combined Authority							Change in levy between years is attributable to:
Last Year 2020-2021			This Year 2021-2022			£m	
	Gross Expenditure £m	Gross Income £m	Net Expenditure £m	Gross Expenditure £m	Gross Income £m	Net Expenditure £m	Inflation and other cost pressures
Tyne Tunnels	28.7	28.7	0.0	30.3	30.3	0.0	4.7
Transport co-ordination and former ITA	2.1	0.0	2.1	3.3	0.0	3.3	(1.9)
Grant to Nexus	87.4	0.0	87.4	89.2	0.0	89.2	Movement on contribution from reserves
Grant to Durham and Northumberland	21.7	0.0	21.7	21.8	0.0	21.8	(2.7)
	139.9	28.7	111.2	144.6	30.3	114.3	0.1
less transfer from Reserves			0.0			2.7	
Total Budget Requirement			111.2			111.6	
Less Rail Grants and Miscellaneous Grants			(28.4)			(28.7)	
Levy			82.8			82.9	

BUDGET INFORMATION

Precept: Police and Crime Commissioner for Northumbria						
	Last Year 2020-2021			This Year 2021-2022		
	Gross Expenditure £m	Gross Income £m	Net Expenditure £m	Gross Expenditure £m	Gross Income £m	Net Expenditure £m
Police General	321.4	18.9	302.5	337.3	17.0	320.3
Less: Formula Grant			235.3			250.2
Pension Grant			3.4			3.4
Legacy Council Tax Grant			1.3			1.3
Local Council Tax Support Scheme Grant			0.0			1.7
Council Tax Support Grant			6.9			6.9
Collection Fund Surplus			0.9			(0.2)
Precept			54.7			57.0

Change in Precept between years is attributable to:

	£m
Inflation, recruitment and other budget pressure	22.5
Full year impact of investment approved in 2020–2021	2.0
Investment 2021–2022 - additional police posts	2.7
Budget savings	(2.3)
Increase in formula grant funding	(14.8)
Ring-fenced uplift grant	2.1
Local Council Tax Support Scheme Grant (Covid-19)	(1.7)
Change in required transfer to reserves	(8.2)

2.3

Sunderland's proportion of the Police and Crime Commissioner for Northumbria's precept is £10.075m in 2021–2022 (2020–2021 £9.773m).

This represents £143.84 of the Band D council tax and equates to a council tax increase of 4.99%.

Council Tax represents 16.9% of Gross Expenditure (2020–2021 17.0%) this reduces the reliance on council tax as a funding stream.

Precept: Tyne and Wear Fire and Rescue Authority						
	Last Year 2020-2021			This Year 2021-2022		
	Gross Expenditure £m	Gross Income £m	Net Expenditure £m	Gross Expenditure £m	Gross Income £m	Net Expenditure £m
Fire Service	51.6	4.1	47.5	54.1	7.3	46.8
			47.5			46.8
Contingencies			2.7			1.7
Interest on Balances			(0.3)			0.0
Total Budget Requirement			49.9			48.5
Less Revenue Support Grant			8.9			11.5
Collection Fund Surplus (Deficit)			0.5			(2.1)
Local Council Tax Support Scheme Grant			0.0			0.8
Top up Grant			11.5			9.0
Business Rate Share			3.9			3.8
SFA Adjustment			0.6			0.8
Precept			24.5			24.7

Change in Precept between years is attributable to:

	£m
Cost pressures	2.9
Increase in Government funding	(1.1)
IRMP Impacts/Savings	0.8
Budget Efficiencies	(4.7)
Increase in net use of reserves	(0.3)
Increase in Collection Fund net deficit	2.6

0.2

Sunderland's proportion of the Tyne and Wear Fire and Rescue Authority precept is £5.998m in 2021–2022 (2020–2021 £5.990m).

This represents £85.64 of the Band D council tax and equates to a council tax increase of 1.99%.

Council Tax represents 44.4% of Gross Expenditure (2020–2021 45.2%) this reduces the reliance on council tax as a funding stream.

More than **seven out of ten** households in Sunderland pay their Council Tax by Direct Debit because it's the easiest way.


Sunderland
City Council



Why don't you join them?



Do it online...

- Set up a Council Tax Direct Debit
- Report missed refuse collections or damaged/missing bins
- Arrange a bulky waste collection
- Request maintenance of grass, trees and water features
- Report fly tipping
- Request a copy of a birth, death or marriage certificate
- Book an appointment to register a birth or death
- Book an appointment to give notice of a marriage or civil partnership
- Report litter
- Report anti-social behaviour and hate crimes
- Report an issue with street lighting
- Sign up to garden waste collections

...and much more at www.sunderland.gov.uk