

Electric Vehicle (EV) Charging Points in Sunderland

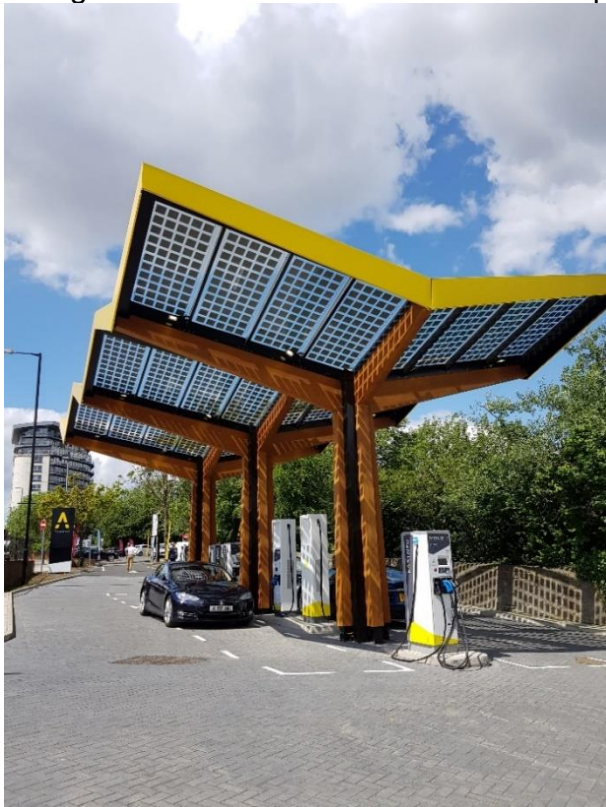
Plugged In Places / Charge Your Car Electric Vehicle Infrastructure

Many of the Sunderland City Council charging posts were installed between 2010 and 2012; and given changes in EV battery and charging post technology are due to be replaced. Currently there are forty-six public access charging points installed through the Plugged In Places Programme at various car parks and facilities within Sunderland. The contract with the previous supplier Charge Your Car (CYC) has now expired.

Rapid Charging Infrastructure

As part of the Go Ultra Low North-East programme, Sunderland provided the host site for the first UK 24/7 drive through electric filling station. The filling station, opened in June 2019, on West Wear Street near to the City Centre; provides four 50kW plus two 175kW ultra- rapid charging facilities sited below a bespoke PV triple canopy managed by Fastned UK. Rapid charging stations and hubs have been also provided at Speculation Place in Washington and Station Road in Houghton-le-Spring.

Filling Stations – West Wear Street and Speculation Place



Filling Station – Station Road Houghton-Le-Spring



Note – Maximum stay is currently 4 hours for cars actively charging

In Council managed car parks such as Multi-Storey, pay and display parking will apply upon arrival. Charge-point provision will also include disabled parking accessible bays.

The following car parks have EV charging points.

Car Park	EV Points in Operation
Boughton Street Car Park	2
Charles Street Car Park	2
Civic Centre Level 4 and 5	3
Harbour View Car Park	2
Livingstone Road Car Park	2
Nile Street Car Park	1
St Marys Level 1 and 2	4
Sunniside Level 2 and 4	3
Tatham Street Car Park	1
West Wear Street Car Park	6 (Fastned)
Morgan Street Car Park	2
Ocean Road Car Park	1
Station Road Car Park	1
Barnes Street Car Park	Rapid Charging
Speculation Place Car Park	Rapid Charging

Residential Charging Schemes

The Council has begun a programme to enable the delivery of charging points for use by residents at both on-street and off-street locations across Sunderland. The first phase of this programme is to be delivered during 2021 with further plans to extend the delivery to more locations across the City for those residents who do not have the opportunity to install a charging point at home either on the side of the house adjacent a driveway or within a garage.

A request can be made to the Council to consider on-street locations by emailing evcharging@sunderland.gov.uk

Each resident request received will be assessed and approval or otherwise will be based on any prevailing physical constraints.

The main considerations for a scheme are set out below:

- On and Off-Street Residential Charging Points are to be located within accessible and / or communal areas where the Charging Points can be used by several residents with EV ownership.
- The bays are to be in an appropriate location within public highway or Council land and sited so as not to obstruct the safe passage of vehicular or pedestrian traffic.
- The bays are not for the exclusive use of individuals and are not to be treated as private parking places.
- Charge Points will be located to ensure the safe passage of pedestrians and avoid any cable crossing the footway onto the road as a potential hazard. This is to ensure that any resident would not be held liable if anyone suffered an injury as a result of tripping on the cable. For the avoidance of doubt charging cables running along or across footways or the road are not allowable as a method for charging vehicles.
- Access to the Charging Points will be through a private Membership scheme joined by individual residents and managed by an recognised Charge Point operator. Access to plug a connector is enabled via an Access fob card or mobile phone application. The scheme will require a subscription fee and is managed by the operator and not the Council. Payment is then taken through a pre agreed subscription on a pence per kWh rate. Some operators may allow use of debit card as a means of payment.
- The bays will be subject to a Traffic Regulation Order to ensure the bays and Charging Points are used correctly and effectively to enable a sufficient level of charging time and to avoid misuse such as bay blocking. The bay use will be monitored and subject to enforcement if necessary.
- On-Street and Off-Street parking places for Electric Vehicles will be subject to the introduction of a Traffic Regulation Order. The TRO will apply to Electric Vehicles (passenger) not in excess of 3.5 tonnes gross vehicle weight
- The Maximum period for which vehicles may wait may be time limited in a designated parking bay while vehicle being actively recharged.
- Days of Operation of Parking Place will cover all days
- Hours of Operation of Parking Place will cover all hours

Residential Electric Vehicle Charging

Residents of Sunderland who either own or are considering the purchase or lease of an electric car can access government grant funding to install a home charger.

The first choice for those who are able is to have a charging point installed at home either on the side of the house adjacent a driveway or within a garage. There is the “OLEV Grant”, which is a government grant which entitles applicants to money off specific low emission vehicles and money off electric charger installation.

This can be done by making an application via the website and selecting an approved charge-point installer. Further information on this can Plug-in car grants can be found at: <https://olevgrant.com/>

Other options include various leasing schemes, where the dealership or car provider will arrange a home charge-point to be installed on behalf of the resident.

Future of the Electric Vehicle Infrastructure Network

Sunderland are in the process of making changes to secure the future operation and maintenance of charging infrastructure. Going forward the Electric Vehicle charge point network needs to provide a range of options including home-charging, workplace charging and rapid charging to accommodate different journey patterns and the needs of EV drivers.

Contact us at evcharging@sunderland.gov.uk