



Council Tax 2025–2026

How much you pay and how it's spent



**Sunderland
City Council**

Your Council Tax Bill

In 2024–2025 national circumstances and global events continued to impact our city. So, working with our partners we remain committed to delivering the best services possible. Progress in the past year includes:

- The ongoing regeneration of Riverside Sunderland with:
 - The opening of Sheepfolds Stables
 - Development of the Housing Innovation and Construction Skills Academy which Sunderland College will open later this year
 - Preparatory works for a new residential neighbourhood
- Launching the free Sunderland App, which has everything residents and visitors need to know about what's going on in the city
- Continuing to develop the International Advanced Manufacturing Park in Washington including the official opening of a new factory by JATCO Ltd, which will produce electrified powertrains for Nissan
- Opening a sensory room for children and adults with disabilities as part of Elemore Park's ongoing transformation
- Implementing the revised citywide Public Spaces Protection Order to tackle persistent ASB, environmental crime and quality of life issues

Our focus remains on ensuring that we're creating a connected, international city with opportunities for all. Our priority is ensuring that we understand all our communities' aspirations, needs and concerns; to connect residents to the benefits being created through our regeneration and investment programmes. Forthcoming plans and projects include:

- Working with partners to complete Riverside Park, Culture House, the new eye hospital and residential developments at Nile + Villiers, Farrington Row and West Park
- Opening the Maker and Faber office developments and the pedestrian/cycleway smart bridge at Riverside Sunderland

- Commencing work on the Crown Works Studios, project to develop a world-class film and TV production facility
- Improving domestic abuse support services through a Women's Health Hub
- Developing new strategies to address issues of key importance to residents including community safety, social cohesion and child poverty
- Delivering the Expo Sunderland event programme including the Homes and Gardens visitor attraction
- Hosting the opening ceremony and first game of the Women's Rugby World Cup 2025

Through a prolonged period of underfunding for local government, we have worked hard to deliver essential services and create wide ranging opportunities. The new Government's first funding settlement has been more positive with additional resources allocated to councils such as ours, on the basis of need.

We will need to continue to deal with the impacts of previous underfunding. For 2025–2026 this means having to make further budget cuts of £10.2m and use £9m of reserves to balance the budget. With a more positive settlement, whilst we do have to raise council tax by 4.49%, we have taken steps to ensure we do not raise it to the maximum level permitted.

In 2025-26 we will continue, alongside partners, to seize every opportunity to drive the city's transformation into a great place to live, work, achieve and play, where people are proud to belong.



Cllr Michael Mordey
Leader of
Sunderland City Council



Patrick Melia
Chief Executive
Sunderland City Council

What you will pay

The amount of council tax you pay depends on the value of your home. More expensive properties pay more council tax. Each home is placed in a valuation band based on what your home was valued at in 1991. This table sets out the council tax levels for 2025–2026 for each valuation band.

Your council tax bill includes charges for levies and precepts which the council is legally required to collect on behalf of other organisations. Charges for levies are included within the City Council Tax Level shown in column 2. Precepts from the Tyne and Wear Fire and Rescue Authority and the Police and Crime Commissioner for Northumbria are shown in columns 3 and 4.

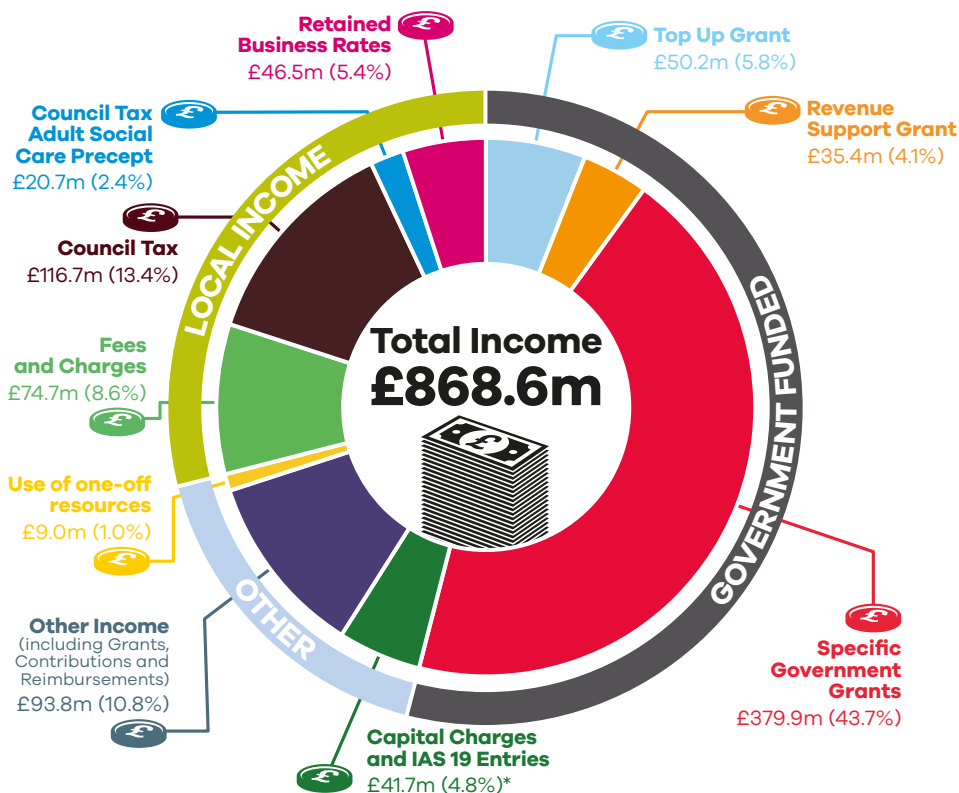
Your council tax bill states the band that applies to your property. Residents in most of Sunderland will pay the Total Council Tax Level in column 5. Residents of Hetton will pay the Total Council Tax Level in column 7.

1	2	3	4	5	6	7
Valuation Band	City Council Tax Level £ p	Tyne and Wear Fire and Rescue Authority Tax Level £ p	Police and Crime Commissioner for Northumbria Tax Level £ p	Total Council Tax Level £ p	Hetton residents only	
					Hetton Town Council Tax Level £ p	Total Council Tax Level £ p
					A	1,197.32
B	1,396.87	77.86	152.32	1,627.05	11.71	1,638.76
C	1,596.43	88.99	174.08	1,859.50	13.37	1,872.87
D	1,795.98	100.11	195.84	2,091.93	15.05	2,106.98
E	2,195.09	122.36	239.36	2,556.81	18.39	2,575.20
F	2,594.19	144.60	282.88	3,021.67	21.74	3,043.41
G	2,993.30	166.85	326.40	3,486.55	25.08	3,511.63
H	3,591.96	200.22	391.68	4,183.86	30.10	4,213.96

Where the council's money will come from in 2025–2026

The council delivers a wide range of services including schools, caring for the elderly, and waste collection. The cost of running and maintaining the day-to-day services provided by the council is called Revenue Expenditure.

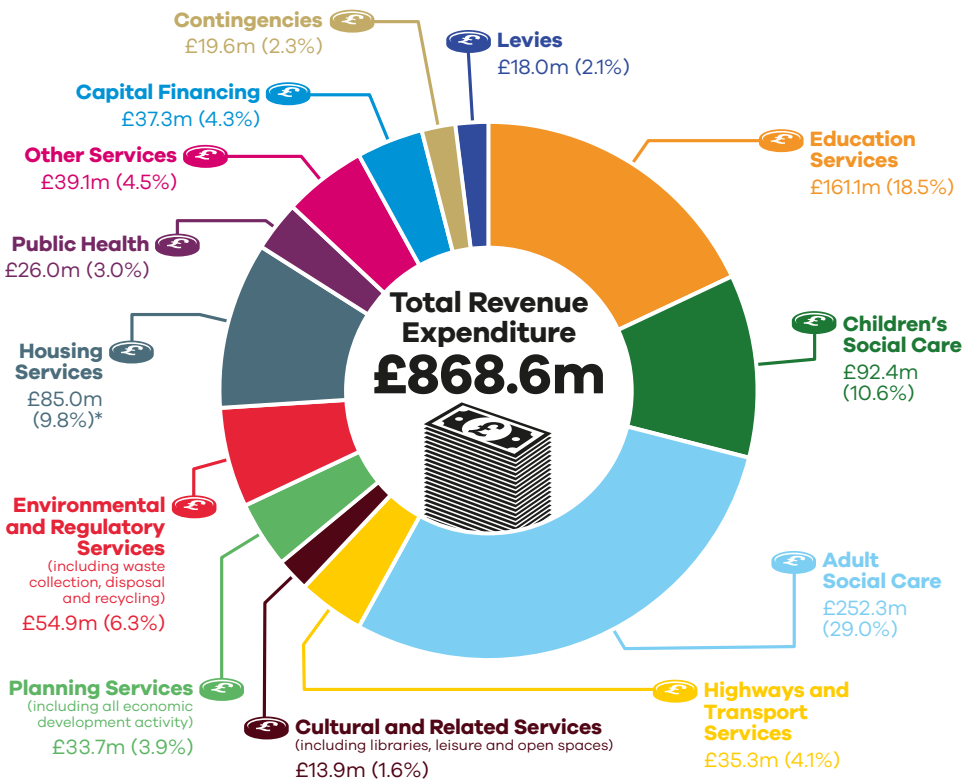
The council tax you pay forms only part of the funding to pay for these services. The chart below shows that over half of the council's income comes from grants from the Government and the remainder comes from council tax, Retained Business Rates, and users of council services.



* Capital charges and IAS19 amounting to £41.7m are included in gross expenditure and income in accordance with the Service Reporting Code of Practice. This has no impact on the level of council tax.

How the council's money will be spent in 2025–2026

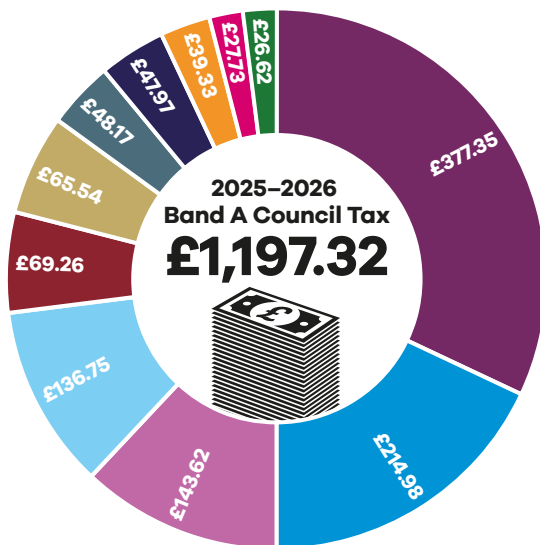
The chart below shows what the council plans to spend on its services in 2025–2026. Total or gross expenditure is the total revenue costs of running council services before any income from grants, fees and charges are taken into account.



* This expenditure mainly relates to Housing Benefit payments, funded by a specific government grant.

How your Council Tax is used to fund council services

The chart below shows the services provided by Sunderland City Council that Council Tax payers contribute towards. The illustration below is for a Band A Council Tax payer, which applies to 59.6% of households in Sunderland.



Service	2025-2026 Band A Council Tax £ p	Percentage
Adult Social Care	377.35	31.52%
Children's Social Care	214.98	17.96%
The cost of funding our capital investment in roads, buildings, vehicles, parks etc	143.62	12.00%
Maintaining parks and open spaces, refuse collection and keeping our city clean	136.75	11.42%
Levies including Public Transport	69.26	5.78%
Central services which keep the rest running	65.54	5.47%
Maintaining the roads, car parks, footpaths and street lights	48.17	4.02%
Education Services	47.97	4.01%
Libraries, Museums and Leisure services	39.33	3.28%
Regenerating our city and attracting new businesses	27.73	2.32%
Support to housing and homelessness	26.62	2.22%
	1,197.32	100.00%

Adult Social Care funding and council budget consultation

The Secretary of State made an offer to adult social care authorities. (“Adult social care authorities” are local authorities which have functions under Part 1 of the Care Act 2014, namely county councils in England, district councils for an area in England for which there is no county council, London borough councils, the Common Council of the City of London and the Council of the Isles of Scilly.)

The offer enabled an adult social care authority to charge an additional “precept” on its council tax without holding a referendum, to assist the authority in meeting its expenditure on adult social care from the financial year 2016–17.

It was originally made in respect of the financial years up to and including 2019–20 and the Secretary of State has renewed this offer in subsequent years.

In respect of 2025–2026 the council has elected to increase its adult social care precept by 2%.

The total council tax raised for 2025–2026 now includes the cumulative impact of a 2% social care precept raised from 2016–2017, 3% raised from 2017–2018, 2% raised from 2018–2019, 1% raised from 2019–2020, 2% raised from 2020–2021, 3% raised from 2021–2022, 1% raised from 2022–2023, 1% raised from 2023–2024, 2% raised from 2024–2025 and 2% raised from 2025–2026.

The additional £20.7m raised in 2025–2026 will help to meet expenditure on adult social care.

BUDGET CONSULTATION

A budget consultation took place between December 2024 and January 2025, seeking views on the budget savings proposals and the level of council tax increase for 2025–2026. The responses received during the consultation, and feedback from residents have been used to inform the budget proposals for 2025–2026. For 2025–2026 it is proposed to increase core council tax by 2.49% and to increase the social care precept by 2%, resulting in a combined increase of 4.49% i.e., within the 5% referendum limit permitted by the Government.



The cost of delivering services 2025–2026

The budget for the next financial year has been prepared taking account of spending pressures and commitments associated with the provision of council services.

The cost of services

In addition to services provided by the council, other bodies including the Police and Crime Commissioner for Northumbria and the Tyne and Wear Fire and Rescue Authority also provide services which the council must take into account.

This table provides a summary of the net cost of these services for 2025–2026 and how the Band D Council Tax is built up.

Last Year 2024–2025 £m	Summary net cost of services	This Year 2025–2026 £m	Band D Council Tax £ p
128.024	City Council (including Levies)	137.294	1,795.98
7.084	Tyne and Wear Fire and Rescue Authority	7.653	100.11
13.544	Police and Crime Commissioner for Northumbria	14.971	195.84
148.652	Total	159.918	2,091.93
0.063	Hetton Town Council	0.065	15.05
148.715	Total (Hetton residents only)	159.983	2,106.98

Cost per head of population

The table below shows the total cost to each person in Sunderland of services provided by the council and Precepting Authorities, after taking account of the income received from Revenue Support Grant and Retained Business Rates.

	Total Net Budget Requirement £ p	Government Funding* £ p	Retained Business Rates £ p	Collection Fund (Surplus)/Deficit £ p	Council Tax Requirement £ p
City Council	971.34	(308.29)	(167.43)	(0.89)	494.73
Tyne and Wear Fire and Rescue Authority	56.81	(23.45)	(6.31)	(0.47)	26.58
Police and Crime Commissioner for Northumbria	276.83	(218.81)	0.00	(0.75)	57.27
Total	1,304.98	(550.55)	(173.74)	(2.11)	578.58

* Reflects Revenue Support Grant and Top Up Grant

Budget information

SUNDERLAND CITY COUNCIL BUDGET INFORMATION

The council needs to collect £9.3m more from council tax payers in 2025–2026 than it did in 2024–2025 to meet increasing cost pressures after taking into account increased government funding. The remaining pressure has again been funded by using reserves. Details are shown in the table opposite.

	£m
Net Funding Changes	(30.7)
Spending pressures and additional investment	51.1
Planned budget savings	(10.2)
Business Rates/Collection Fund impact	(0.9)
Change in use of Reserves	0.0
Total	9.3

Last Year 2024–2025				This Year 2025–2026			
Gross Expenditure £m	Gross Income £m	Net Expenditure £m		Gross Expenditure £m	Gross Income £m	Net Expenditure £m	
224.9	(92.2)	132.7	Adult Social Care	252.3	(104.3)	148.0	
87.1	(11.0)	76.1	Children's Social Care	92.4	(12.3)	80.1	
146.3	(131.8)	14.5	Education Services	161.1	(144.3)	16.8	
13.1	(1.6)	11.5	Cultural and Related Services	13.9	(1.0)	12.9	
49.6	(8.4)	41.2	Environmental and Regulatory Services	54.9	(8.4)	46.5	
35.5	(7.9)	27.6	Highways and Transport Services	35.3	(8.1)	27.2	
81.7	(77.8)	3.9	Housing Services (mainly Housing Benefit payments)	85.0	(78.5)	6.5	
34.5	(25.0)	9.5	Planning Services	33.7	(22.4)	11.3	
26.0	(26.0)	0.0	Public Health	26.0	(26.0)	0.0	
40.7	(16.5)	24.2	Other Services	39.1	(18.1)	21.0	
0.0	(96.1)	(96.1)	Other Core Grants	0.0	(122.5)	(122.5)	
34.3	0.0	34.3	Capital Financing Costs	37.3	0.0	37.3	
773.7	(494.3)	279.4		831.0	(545.9)	285.1	
15.3	0.0	15.3	Provision for contingencies and strategic priorities	19.6	0.0	19.6	
0.0	(2.3)	(2.3)	Interest on Balances	0.0	(2.3)	(2.3)	
0.0	(9.0)	(9.0)	Movement on Reserves	0.0	(9.0)	(9.0)	
0.0	(42.8)	(42.8)	Capital Charges and IAS19 entries	0.0	(41.7)	(41.7)	
789.0	(548.4)	240.6	TOTAL EXPENDITURE	850.6	(598.9)	251.7	
			Levies and Precepts				
		171	North East Combined Authority			176	
		0.2	Environment Agency - Flood Defence			0.2	
		0.1	NE Inshore Fisheries Conservation Authority			0.1	
		0.1	Hetton Town Council			0.1	
		258.1	TOTAL BUDGET REQUIREMENT			269.7	
			Less:				
		(34.6)	Revenue Support Grant			(35.4)	
		(46.4)	Retained Business Rates			(46.5)	
		(49.6)	Top Up Grant			(50.2)	
		0.6	Collection Fund (Surplus)/Deficit			(0.2)	
		128.1	COUNCIL TAX REQUIREMENT			137.4	

Budget information

LEVIES AND PRECEPTS COLLECTED BY THE COUNCIL

Your council tax bill is made up of a number of elements besides the council's council tax requirement. These include levies and precepts that the council is legally required to collect on behalf of other organisations. For Sunderland City Council these organisations are:

Levy: Environment Agency						
Last Year 2024–2025				This Year 2025–2026		
Gross Expenditure £m	Gross Income £m	Net Expenditure £m		Gross Expenditure £m	Gross Income £m	Net Expenditure £m
35.7	(32.9)	2.8	Flood Defence	33.7	(30.9)	2.8
		2.8	Levy			2.8
Change in levy between years is attributable to:						£m
Programme of works for both capital and revenue needed by the Regional Flood and Coastal Committee						0.0
						0.0

Sunderland's proportion of the Environment Agency levy is £0.276m in 2025–2026 (2024–2025 £0.266m).

Levy: North East Combined Authority						
Last Year 2024–2025				This Year 2025–2026		
Gross Expenditure £m	Gross Income £m	Net Expenditure £m		Gross Expenditure £m	Gross Income £m	Net Expenditure £m
39.2	(39.2)	0.0	Tyne Tunnels	42.8	(42.8)	0.0
8.2		8.2	Transport co-ordination and former ITA	7.0		7.0
102.5		102.5	Grant to Nexus	127.4		127.4
23.5		23.5	Grant to Durham and Northumberland	23.7		23.7
173.4	(39.2)	134.2		200.9	(42.8)	158.1
		(6.1)	Less transfer from Reserves			(10.9)
		128.1	Total Budget Requirement			147.2
			Less			
		(34.3)	Rail Grants and Miscellaneous Grants			(51.1)
		93.8	Levy			96.1
Change in Budget Requirement between years is attributable to:						£m
Inflation and other cost pressures						27.5
Increased income						(3.6)
Movement on contribution from reserves						(4.8)
						19.1

Sunderland's proportion of the North East Combined Authority levy is £17647m in 2025–2026 (2024–2025 £17.077m).

Budget information

Precept: Police and Crime Commissioner for Northumbria						
Last Year 2024–2025				This Year 2025–2026		
Gross Expenditure £m	Gross Income £m	Net Expenditure £m		Gross Expenditure £m	Gross Income £m	Net Expenditure £m
420.5	(42.6)	377.9	Police General	453.4	(52.8)	400.6
			Less:			
		(282.0)	Formula Grant			(292.4)
		(11.1)	Special Pension Grant			(10.3)
		0.0	National Insurance Compensation Grant			(5.7)
		(6.9)	Council Tax Support Grant			(6.9)
		(1.3)	Legacy Council Tax Freeze Grant			(1.3)
		(1.3)	Constituent Authorities' Net (Surplus)/Deficit			(1.1)
		75.3	Precept			82.9

Change in Precept between years is attributable to:

Pay Awards, Inflation, recruitment, budget pressures and other budget adjustments	£m
Increase in planned use of reserves	25.6
Budget reductions and efficiencies	(3.3)
Increase in Home Office Formula grant	(6.8)
Reduction in Home Office Uplift Maintenance Grant	(10.4)
Reduction in Council Tax Net Surplus	2.3
	0.2

7.6

This represents £195.84 of the Band D Council Tax and equates to a council tax increase of 7.70%. Council tax represents 18.3% of Gross Expenditure (2024–2025 17.9%) this increases the reliance on council tax as a funding stream.

The amount to be collected from Sunderland residents on behalf of the Police and Crime Commissioner for Northumbria is £14.970m in 2025–2026 (£13.544m in 2024–2025).

Budget information

Precept: Tyne and Wear Fire and Rescue Authority						
Last Year 2024–2025				This Year 2025–2026		
Gross Expenditure £m	Gross Income £m	Net Expenditure £m		Gross Expenditure £m	Gross Income £m	Net Expenditure £m
69.2	(6.1)	63.1	Fire Service	71.3	(6.1)	65.2
		63.1				65.2
		1.5	Contingencies			1.9
		(1.2)	Interest on Balances			(1.1)
		63.4	Total Budget Requirement			66.0
			Less:			
		(13.5)	Revenue Support Grant			(12.9)
		(12.7)	Top Up Grant			(13.7)
		(3.7)	Business Rates Local Share			(3.9)
		(3.2)	Business Rates Under-Indexation Grant			(3.4)
		(0.1)	National Insurance Grant			(0.5)
		(0.7)	Business Rates Grant			(0.5)
		(0.8)	Collection Fund (Surplus)/ Deficit			(0.5)
		28.7	Council Tax Requirement			30.6

Change in Precept between years is attributable to:

Cost Pressures	£m
Increase in net Government funding	2.6
Increase in Business Rates Local Share	(0.7)
Decrease in Collection Fund net surplus	(0.2)
	0.2

1.9

This represents £100.11 of the Band D Council Tax and equates to a council tax increase of 5.26%.

Council tax represents 41.9% of Gross Expenditure (2024–2025 40.6%) this increases the reliance on council tax as a funding stream..

The amount to be collected from Sunderland residents on behalf of the Tyne and Wear Fire and Rescue Authority precept is £7.652m in 2025–2026 (£7.084m in 2024–2025).



Do it online...

- Set up a council tax Direct Debit or make a payment
- Report a change in address
- Report a Housing Benefit/ Council Tax Support change in circumstance
- Report missed refuse collections or damaged/ missing bins
- Report a damaged drain gully, manhole, road, pavement or surface
- Arrange a bulky waste collection
- Report fly tipping
- Request a copy of a birth, death or marriage certificate
- Arrange a pest control appointment
- Book an appointment to register a birth or death
- Book an appointment to give notice of a marriage or civil partnership
- Report animal fouling
- Request maintenance of grass, trees, shrubs, hedges and weeds
- Sign up to garden waste collections
- Report anti-social behaviour and hate crimes
- Report an issue with street lighting

...and much more at www.sunderland.gov.uk

More than **seven out of ten** households in Sunderland pay their council tax by Direct Debit because it's the easiest way.

Why don't you join them?



**Sunderland
City Council**