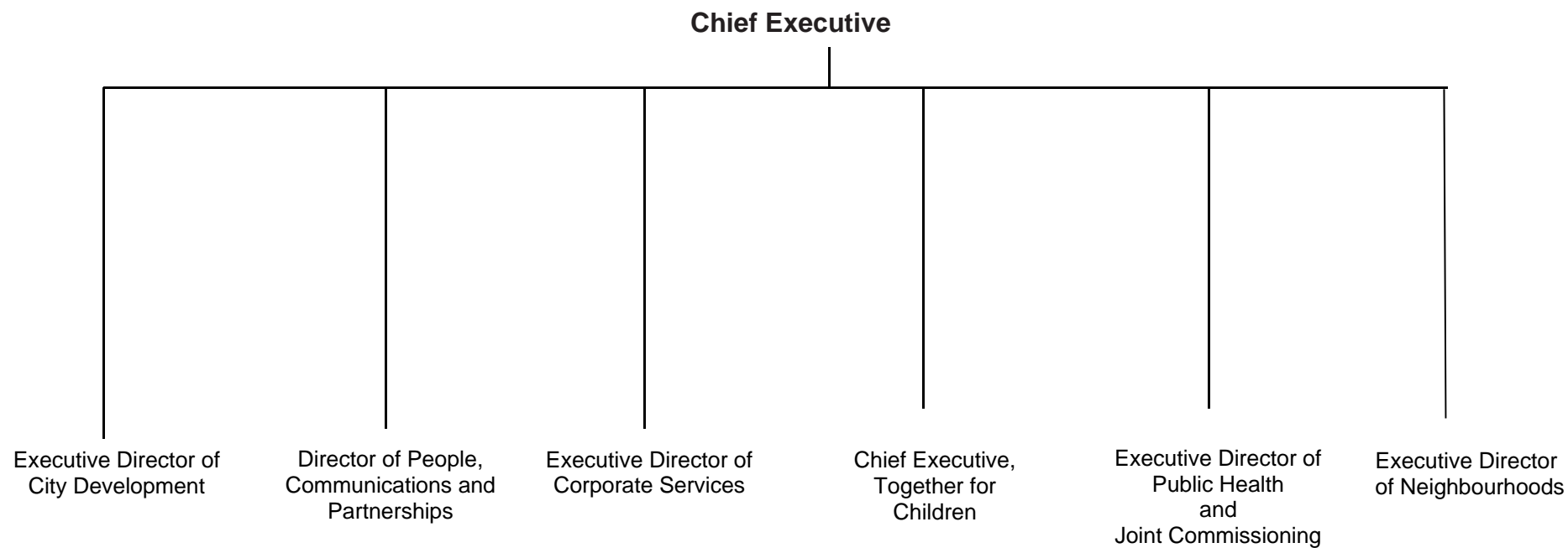
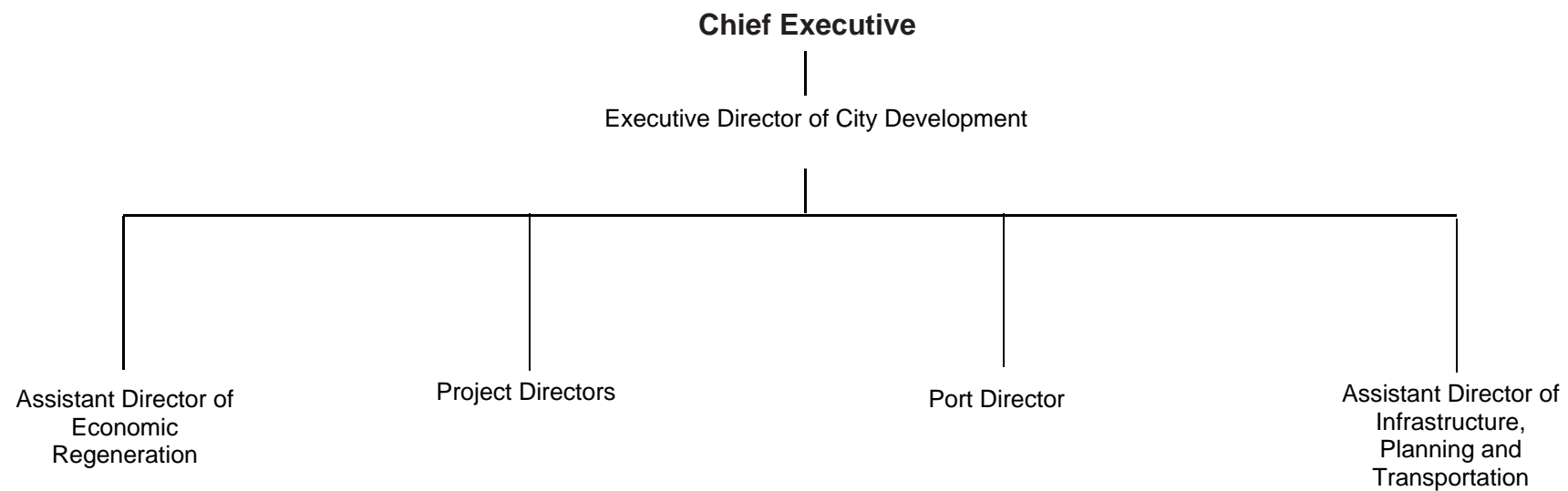
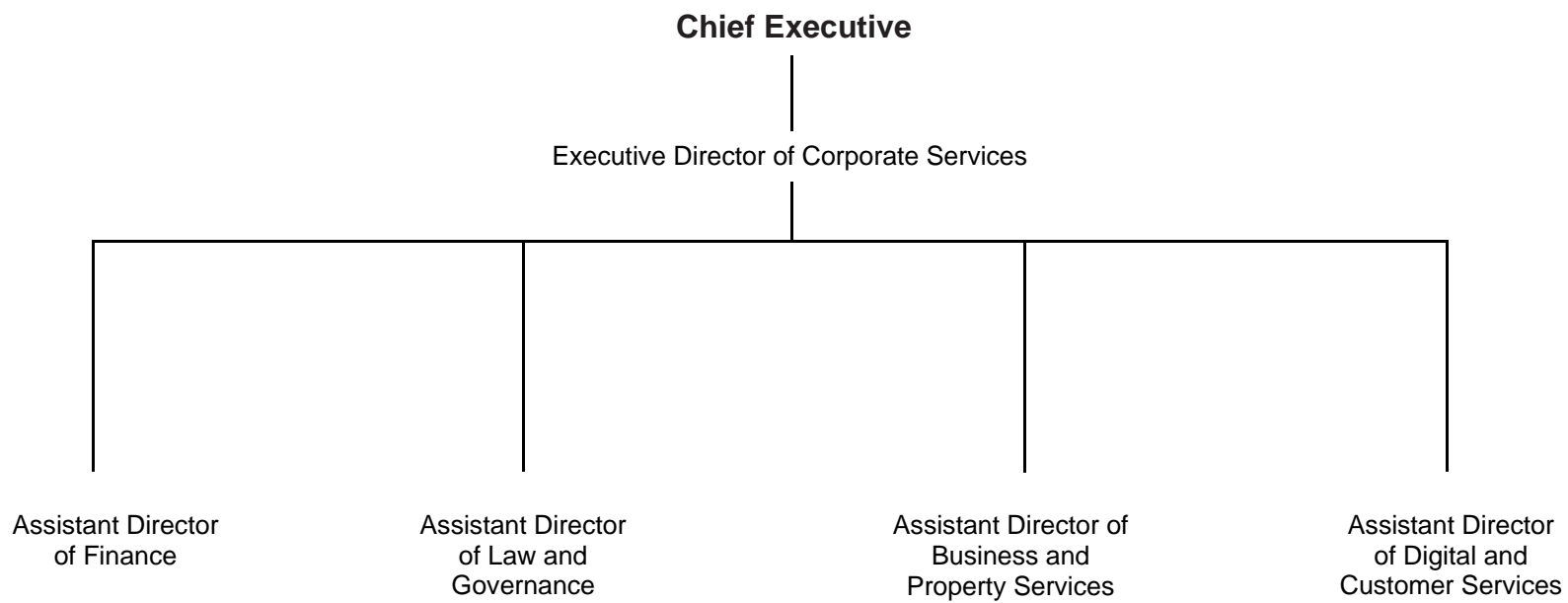
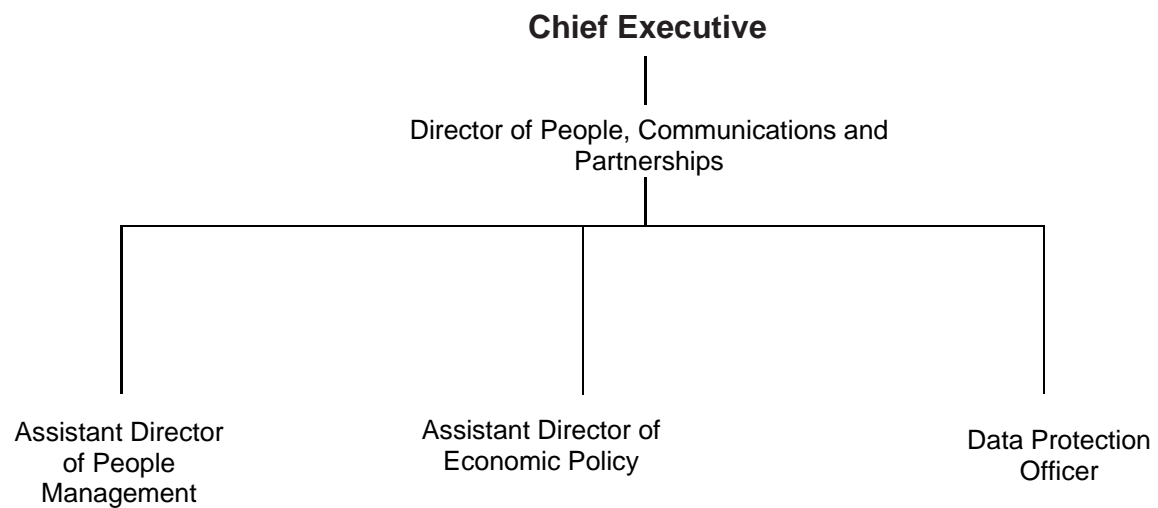


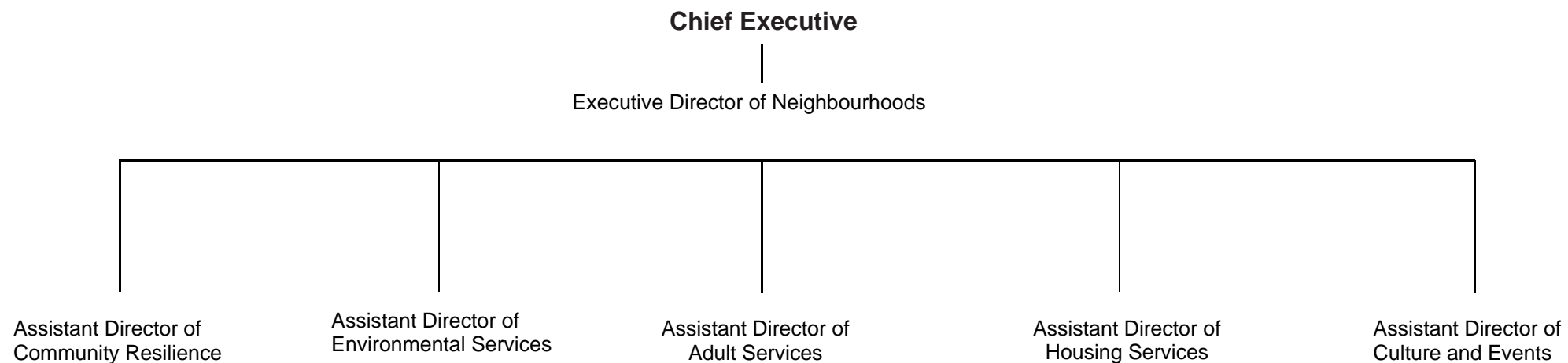
# **Part 7 Management Structure**

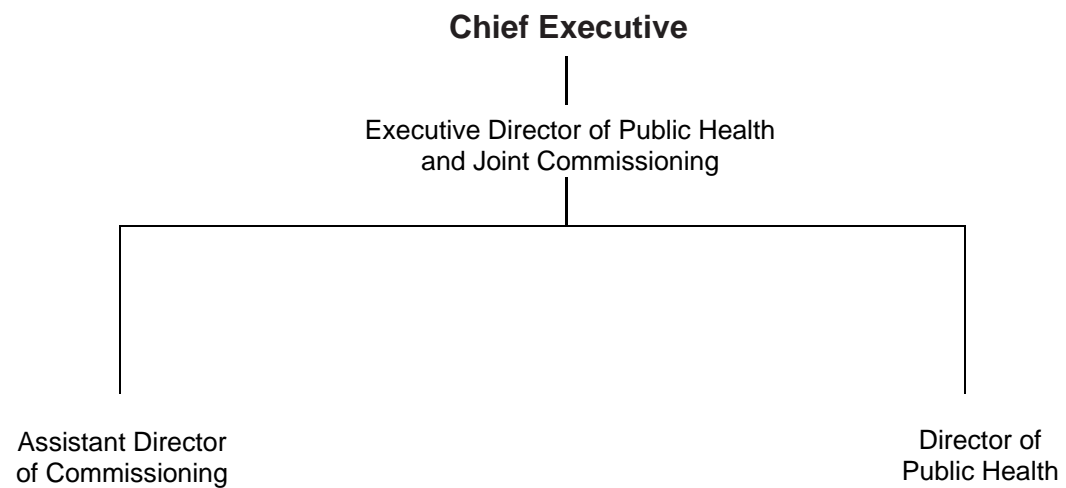




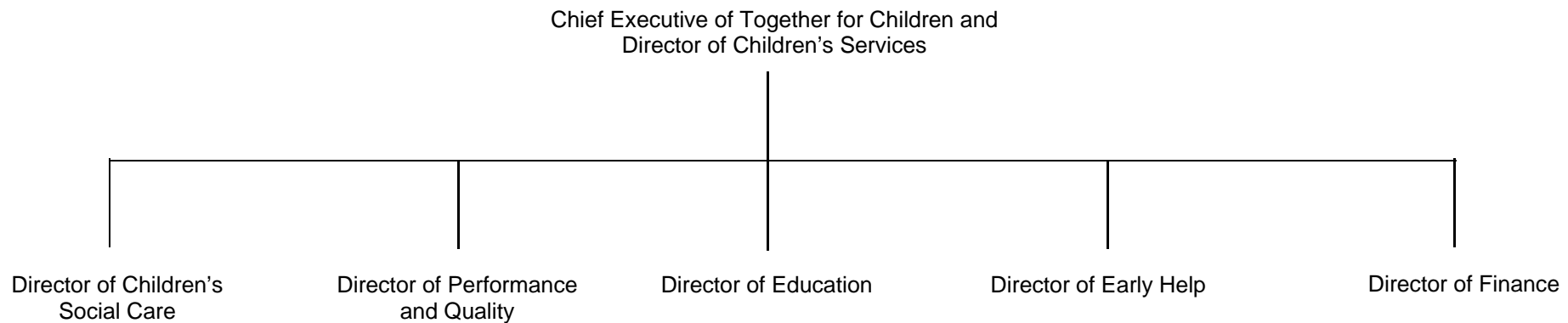








**TOGETHER FOR CHILDREN SUNDERLAND LIMITED**





## **Chief Officers**

Chief Executive (Head of Paid Service)

Executive Director of City Development

Executive Director of Corporate Services (Section 151 Officer)

Executive Director of Neighbourhoods

Executive Director of Public Health and Commissioning

Director of People, Communications and Partnerships

Director of Children's Services (Chief Executive of Together for Children)

In addition, the Director of Public Health and the Assistant Director of Law and Governance are chief officers for the purposes of the Local Government and Housing Act 1989.

## **Assistant Directors**

### **Executive Director of City Development**

Assistant Director of Economic Regeneration

Assistant Director of Infrastructure, Planning and Transportation

Port Director

Project Directors

### **Executive Director of Corporate Services**

Assistant Director of Finance

Assistant Director of Law and Governance

Assistant Director of Business and Property Services

Assistant Director of Digital and Customer Services

### **Executive Director of Neighbourhoods**

Assistant Director of Adult Services

Assistant Director of Community Resilience

Assistant Director of Environmental Services

Assistant Director of Housing Services

Assistant Director of Culture and Events

### **Executive Director of Public Health and Joint Commissioning**

Assistant Director of Commissioning

Director of Public Health

**Director of People, Communications and Partnerships**

Assistant Director of People Management  
Assistant Director of Economic Policy

**Director of Children’s Services/Chief Executive of Together for Children**

Director of Children’s Social Care  
Director of Performance and Quality Assurance  
Director of Education  
Director of Early Help  
Director of Finance